

Berry College

Fact Book

2020-2021

Prepared by the

Office of Institutional Research

October 28, 2021

Table of Contents

<i>Section</i>	<i>Page</i>
I. General Information	1
Accreditation	2
Mission and Purpose	3
<i>Graduate</i> Programs, Vision and Purpose	4
Important Dates in Berry’s History	5
Administrative Officers	7
Organizational Chart of Berry College	10
Degrees and Majors	11
Minors	12
II. Student Information	13
Comparative Enrollment Statistics	14
Historical Enrollment	15
<i>Undergraduate</i> Program Enrollment History by Schools and Undeclared Majors	16
<i>Graduate</i> Program Enrollment History	17
Geographic Distribution of Total Enrollment	18
<i>Total Undergraduate</i> Enrollment by Ethnic Classification	19
<i>Total Graduate</i> Enrollment by Ethnic Classification	20
<i>Undergraduate</i> Enrollment Analysis of Other Countries Represented	21
<i>Graduate</i> Enrollment Analysis of Other Countries Represented	22
SAT/ACT Scores of Entering First-Year Students	23
High School GPA of Entering First-Year Students	24
Application Analysis	25
First-Year Students–Berry College Retention and Graduation Rates	26
Transfer Students–Berry College Retention and Graduation Rates	27
Age Distribution of <i>Undergraduate</i> Students	28
Age Distribution of <i>Graduate</i> Students	29
III. Academic Profile	30
Number of <i>Undergraduate</i> Majors by Schools	31
Summary of <i>Undergraduate</i> Majors and Minors by Schools	31
Number of <i>Undergraduate</i> Majors in Rank Order	32
Number of <i>Graduate</i> Majors	35
Number of <i>Undergraduate</i> and <i>Graduate</i> Majors Summary	35
Dean’s List Summary (Undergraduates)	36

III. Academic Profile (Continued)

Degrees Granted, 2009-2010 Through 2020-2021	37
Total Degrees Awarded, 2019-2020 Through 2020-2021	38
<i>Undergraduate</i> Degrees Awarded by Degree and Major	39
<i>Graduate</i> Degrees Awarded by Degree and Major	42
<i>Undergraduate</i> Students Graduating With Honors	43
Alumni Receiving Master's Degree or Higher	44

IV. Faculty Profiles 45

Institutions Most Frequently Represented by Berry Faculty's Doctorate	46
Faculty	48
Full-Time Faculty, Rank and Degree	49
Full-Time Faculty, Gender Distribution Among Ranks	50
Berry College Faculty, Number and Percent Tenured in Top Three Ranks	51
Full-Time-Equivalent Faculty and Faculty-Student Ratio	52
Age Distribution of Full-Time Faculty	53

V. Financial 54

Alumni Annual Giving	55
Berry College Financial-Aid Programs	56

Section I

General Information

Accreditation

Berry College is accredited by the Southern Association of Colleges and Schools Commission on Colleges (SACSCOC) to award baccalaureate, masters, and education-specialist degrees. Questions about the accreditation of Berry College may be directed in writing to the Southern Association of Colleges and Schools Commission on Colleges at 1866 Southern Lane, Decatur, GA 30033-4097, by calling (404) 679-4500, or by using information available on SACSCOC's website (www.sacscoc.org). Berry's music program is accredited by the National Association of Schools of Music (NASM). Berry's programs in business are accredited by the Association to Advance Collegiate Schools of Business (AACSB).

Berry College is authorized to operate educational programs beyond secondary education in the state of Georgia. That authorization designates the Georgia Non-Public Postsecondary Education Commission as the state agency responsible for receiving complaints made by students enrolled at Berry College. Students may contact the Georgia Non-Public Postsecondary Education Commission to file a complaint using the following contact information: Georgia Non-Public Postsecondary Education Commission, 2082 East Exchange Place, Suite 220, Tucker, GA 30084-5305, Office: (770) 414-3300.

The baccalaureate degree program in nursing at Berry College is accredited by the Commission on Collegiate Nursing Education (<http://www.ccnaccreditation.org>).

Mission and Purpose

Berry College is a comprehensive liberal-arts college with Christian values. The college furthers our students' intellectual, moral and spiritual growth; proffers lessons that are gained from worthwhile work done well; and challenges them to devote their learning to community and civic betterment. Berry emphasizes an educational program committed to high academic standards, values based on Christian principles, practical work experience and community service in a distinctive environment of natural beauty. It is Berry's goal to make an excellent private liberal-arts education accessible to talented students from a wide range of social and economic backgrounds.

Our first responsibility is to provide an education in the liberal arts and professional fields to meet the intellectual, moral, and material needs of our students; and we dedicate ourselves and our academic program toward fulfilling this responsibility. Research, publication, and other scholarly activities are valued and are expected to contribute to good teaching by the faculty. In keeping with this expectation, our faculty and staff dedicate themselves primarily to teaching effectively and to inspiring students to academic excellence.

An essential part of a sound education is the opportunity to explore religious faith and to relate faith with learning responsibly and intelligently, and we dedicate ourselves to providing these opportunities. The college is dedicated to the interdenominational Christian values on which it was founded and welcomes individuals of diverse backgrounds into the campus community.

Worthwhile work complements knowledge and faith in building character. We dedicate ourselves to providing this opportunity. An important part of higher education is the opportunity to participate in the internal affairs and governance of the college. We dedicate ourselves to providing this opportunity for faculty and students.

These dedications guide Berry's faculty, staff, trustees and students toward a realistic and balanced educational program. Our concern for the individual permeates our principles. The ultimate aim of Berry is service to humanity through persons who find here both inspiration and preparation as best expressed in Berry's motto, "Not to be ministered unto, but to minister."

Graduate Programs
Vision and Purpose

Berry's *vision* is to be a recognized leader in graduate education and support services in its geographic area.

The *purpose* of graduate education at Berry is threefold:

- To prepare Berry graduates for leadership roles with the academic foundation, necessary skills, and personal characteristics needed to be positive contributors to business, education, and the community.
- To deliver high-quality educational support services that meet the needs and challenges faced by Berry's partners in business, in education, and in the community.
- To provide a distinctive learning environment in which innovative thinking, ethical decision making, and individual development and team building can flourish for all constituents of the college.

Important Dates in Berry's History

- 1866** October 7, Martha Berry's Birthday.
- 1902** January 13, Boys' Industrial School founded.
- 1903** April 6, Boys' Industrial School incorporated by order of the Judge of the Superior Court of Floyd County.
- 1908** Corporate charter amended with legal name changed to "The Berry School." The Berry Alumni Association was formed with W. Clayton Henson, the school's first graduate, as its first president.
- 1909** Thanksgiving Day. The Martha Berry School for Girls opened with 14 girls in attendance.
- 1910** Former U.S. President Theodore Roosevelt visited Berry.
- 1914** Miss Berry gave a picnic for students on the mountain campus each year. The Mountain Day celebration which is now held on the first Saturday in October in honor of Miss Berry's birthday, is a time when students and alumni join in celebrating this traditional day.
- 1915** First permanent buildings, Berry College Chapel and Blackstone Dining Hall, were constructed.
- 1916** School for older boys started at foot of Lavender Mountain.
- 1917** Corporate charter amended with legal name changed to "The Berry Schools."
- 1923** The Berry Schools accredited by the Southern Association of Colleges and Secondary Schools.
- 1926** Berry Junior College established.
- 1928** Berry Junior College accredited by Southern Association of Colleges and Secondary Schools.
- 1930** Berry College (senior college) established.
- 1931** The Ford Complex, a gift from Henry and Clara Ford, was completed.
- 1932** First senior-college class received degrees.
- 1942** February 27, Miss Martha Berry died.
- 1957** Berry College accredited by Southern Association of Colleges and Schools.
- 1972** Berry College offers Master of Education (M.Ed.) degree.
- 1973** Berry College offers Master of Business Administration (M.B.A.) degree.
- 1976** Berry College women's basketball team won Berry's first national championship.
- 1982** Corporate charter amended with legal name changed to "Berry College, Inc."
- 1983** Berry Academy closed.
- 1984** WinShape Center established through agreement with Truett Cathy, founder and chairman of Chick-fil-A.
- 1985** *Alumni Work Week established.*
Beginning of national recognitions by publications such as U.S. News and World Report.

Important Dates at Berry (Continued)

- 1987** Berry College women's soccer team won its first national championship in only its second year of existence.
- 1991** Berry College reorganized: sixteen departments formed into four schools. Business, Education and Human Sciences, Humanities and Social Sciences, Mathematical and Natural Sciences.
- 1993** Joanna Grant, class of 1994, became Berry's first Rhodes Scholar.
- 1995** Campbell Trust gave Berry College \$55 million.
- 1996** Berry was the site of the summer Olympic Youth Camp, a noncompetitive venue of the Centennial Olympic Games in Atlanta.
- 1998** Berry College men's golf team won the national championship.
- 2001** Berry opened a \$25 million, 130,000-square-foot science center. The Ford Motor Company Fund donated \$9.4 million for the renovation of the Ford Complex.
- 2002** Berry celebrated its Centennial anniversary, launching the \$100 million Century Campaign. The Century Campaign's record-breaking goal was achieved early with contributions totaling \$106.1 million.
- 2008** In January 2008, the Stephen J. Cage Athletic and Recreation Center opens, which ties into an overall effort to link academic, residential and campus-life facilities and create a center of the Berry community.
Berry College joined the Annapolis Group, an organization of leading national independent liberal arts colleges.
Berry College the National Collegiate Athletic Association (NCAA) as a Division III School.
The Gate of Opportunity Scholarship, a program that allows students to graduate debt free by working their way through school, was introduced in 2008.
- 2014** Berry College offers Bachelor of Science Nursing (B.S.N.) degree.
- 2015** Berry College's new Welcome Center opened in spring 2015.
In September 2015, Valhalla Stadium, which includes Williams Field, Dickey Field and Clark Track opens, supporting intercollegiate football, lacrosse, track and field and intramurals.
- 2016** In the spring of 2016, the institution conducted its first full competitive season in outdoor track and field.
- 2018** Oak Hill, Christopher Browning Pavilion (indoor/outdoor venue) opened on May 19, 2018.

Administrative Officers and Staff
2020-2021

President's Office

Stephen R. Briggs, President
Debbie Heida, Chief of Staff
Jonathan Huggins, Chaplain
Erin Moniz, Assistant Chaplain
Marc Hunsaker, Dean, Personal and Professional Development
Mike Burnes, Director, LifeWorks, Director of Student Work Operations
Mark Kozera, Director, Employer Engagement and Career Consultant for the
Campbell School of Business
Sue Tarpley, Director, Career Development and Career Consultant for
Charter School of Education and Human Sciences and
School of Mathematical and Natural Sciences

Chief of Staff

Casee Gilbert, Director of Hospitality and Event Services
Angel Mason, Director of Athletics
Rachel McLucas, Curator and Interim Director of Oak Hill and The Martha
Berry Museum

Academic Affairs

Mary K. Boyd, Provost
David Slade, Associate Provost and Dean of Academic Services
Joyce Heames, Dean, Campbell School of Business
Alan Hughes, Interim Dean, Charter School of Education and Human Sciences
Thomas D. Kennedy, Dean, Evans School of Humanities, Arts and Social Sciences
Alice Suroviec, Dean, School of Mathematical and Natural Sciences
Karen Bachus, Director of Berry College Child Development Center
Laurie Chandler, Director, Bonner Center for Community Engagement
Susan Conradsen, Director, Women's and Gender Studies
Donna Davin, Director, Research and Sponsored Programs
Elizabeth Davis, Director, International Experiences
Bryce E. Durbin, Registrar and Director of Institutional Research
Pamela B. Dunagan, Director, Division of Nursing
Coleman Fannin, Co-Director, Honors Program
Christina Lori Frederick, Director, Berry College Elementary and Middle School
Lauren Heller, Co-Director, Honors Program
Nancy Johnston Mercer, Assistant Dean and Director of M.B.A. Marketing and
Admissions, Campbell School of Business
Calli O'Neal, Interim Coordinator for Academic Transitions
Nathaniel Pearson, Director, Center for Integrity and Leadership
Anna Sharpe, Associate Dean, Student Success

Administrative Officers and Staff, 2020-2021 (Continued)

Advancement and Alumni

Cynthia Inez Court, Vice President for Advancement
Scott Breithaupt, Associate Vice President for Advancement
Jennifer Beard, Director, Alumni Relations
Jean Druckenmiller, Director, Development
Brenda Jenkins, Director, Donor Relations and Stewardship
Jeff Palmer, Director, Advancement Services
Jennifer Schaknowski, Director, Alumni Engagement and Philanthropic Marketing
Matt Shinall, Director, Prospect Research
Stacey Jones Spillers, Director, Foundation Relations and Strategic Partnerships
Anne Paige Wilson, Director, Annual Giving
Rick Woodall, Director, Philanthropic Communications

Business Services and Finance

Brian Erb, Vice President for Finance
Drew Allison, Director, Enterprise Systems
Jonathan Baggett, Chief, Campus Police
Brad Barris, Director, Purchasing
Dan Boyd, Director, Information Security
Jeffrey Todd Bradford, Director, Physical Plant
Amy Cornelieus, Director, User Support
Eddie Elsberry, Director, Sustainability and Environmental Compliance
Debbie Emory, Director, Auditing, Compliance, and Investment Services
Penny Evans-Plants, Chief Information Officer
Jason Murphine, Director, IT Infrastructure
Kim Melton, Director, Budget and Student Financial Services
Wayne Phipps, Director, Human Resources
Danny Price, Director, In-House Legal Counsel
Brad T. Reeder, Assistant Vice President for Financial Services
Gary Will, Assistant Vice President for Campus Safety and Land Management
Billy Yeomans, Director, River Farm Operations and Property Initiatives

Enrollment Management

Andrew R. Bressette, Vice President, Enrollment Management
Glenn Getchell, Director, Admissions
Noemi Sarrion-Cortes, Director, Financial Aid
 Marcia McConnell, Director, New Student Financial Aid, Admissions
Kinsey Stout, Director, Marketing Communications and Event Strategy
Amanda Swendsen, Director, Operations

Administrative Officers and Staff, 2020-2021 (Continued)

Marketing and Communications

Nancy Rewis, Vice President, Marketing and Communications
Shannon Biggers, Director, Creative Services
Cameron Jordan, Assistant Vice President for Marketing and Communication
Chris Reynolds Kozelle, Director, Public Relations
Brant Sanderlin, Director, Photography and Videography

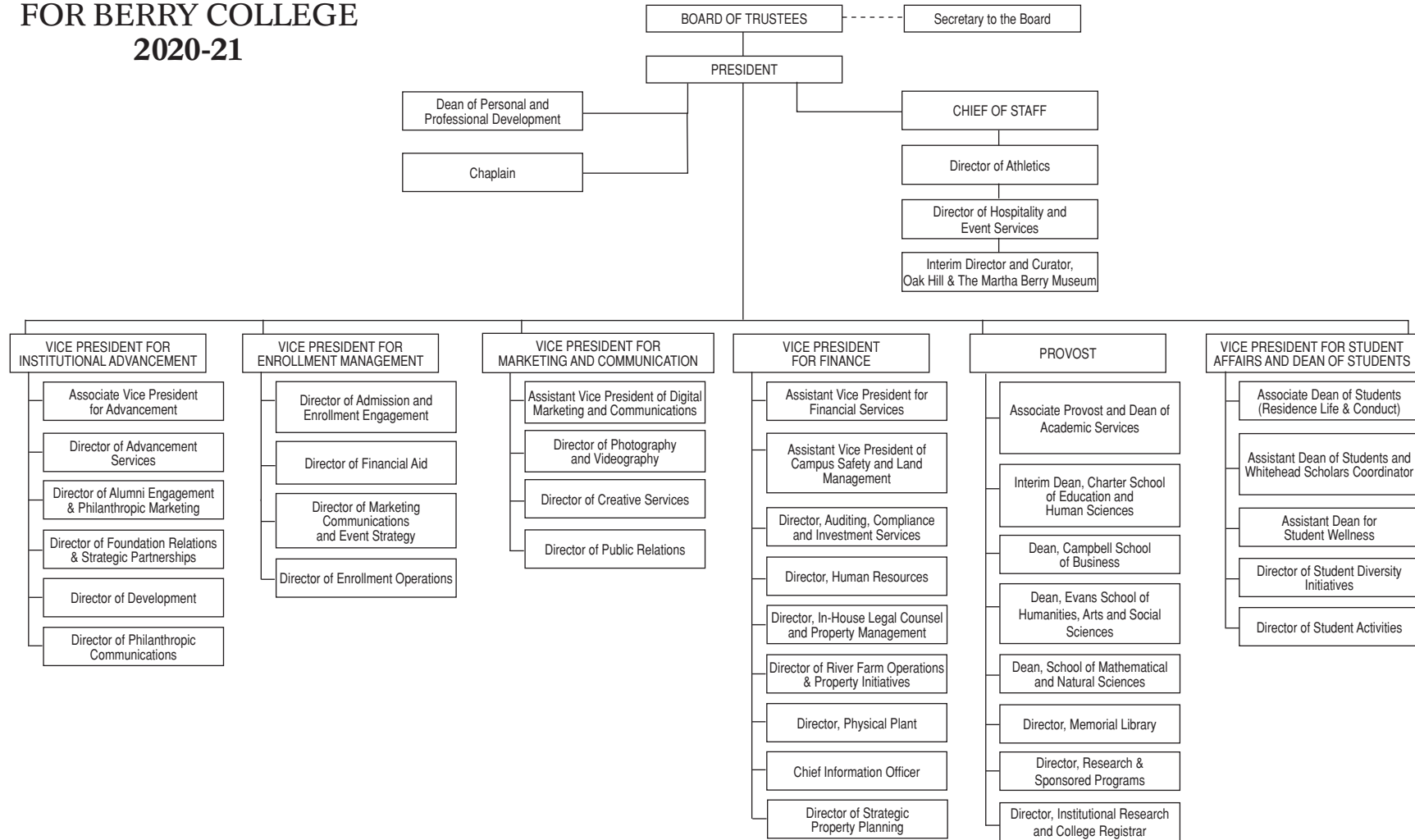
Memorial Library

Sherrie Harrington, Director, Berry College Library

Student Affairs

Lindsey Taylor, Vice President for Student Affairs and Dean of Students
Emma Cordle, Director, Health and Wellness Center
Cecily Crow, Director, Student Activities
Becca Smith, Director, Counseling Center
Meredith Johnson, Assistant Dean of Students and Whitehead Scholars Coordinator
Michael McElveen, Assistant Dean of Student Wellness
Lindsay Norman, Associate Dean of Students for Residence Life
Chon'tel Washington, Director, Student Diversity Initiative

ORGANIZATIONAL CHART FOR BERRY COLLEGE 2020-21



Degrees and Majors
2020-2021

Bachelor of Arts

Art (*Art Education*²; *Art History*; *Studio Art*)
 Communication (*Digital Storytelling*; *Filmmaking & Cinematic Arts*; *Public Relations*; *Sports Communication*)
 Creative Writing
 Economics
 English¹
 Environmental Studies (*Environmental Studies*)
 French² (*French*; *French Studies*)
 German² (*German*; *German Studies*)
 History¹
 History Plus (*Enterprise*; *The Environment*; *Gender*; *Global Issues*; *Justice*; *The Public*; *Technology*; *Writing*)
 Individually Designed
 International Affairs
 Music
 Political Science
 Psychology
 Religion and Philosophy (*Biblical & Christian Studies*; *Ethics & Value Theory*; *Philosophy*; *Religious Studies*)
 Sociology and Anthropology (*Anthropology*; *Sociology*)
 Spanish²
 Theatre

Bachelor of Music

Music Education²
 Music Performance
 Music with Elective Studies in Business

Bachelor of Science

Accounting
 Animal Science (*Pre-Vet/Pre-Professional Science*; *Pre-Production/ Management*)
 Applied Physics
 Biochemistry
 Biology¹ (*Concentration I*; *Concentration II*)
 Chemistry¹
 Creative Technologies
 Economics
 Elementary Education (P-5)
 Environmental Science

Other: Bachelor of Science 3-2 Programs

Dual-Degree Astronomy with University of Hawaii at Hilo
 Dual-Degree Engineering program with Georgia Institute of Technology
 Dual-Degree Engineering program with Kennesaw State University

Bachelor of Science (Continued)

Environmental Studies (*Environmental Policy Studies*)
 Exercise Science (*Allied Health Pre-Professional*; *Clinical/Research*; *Strengths & Conditioning*)
 Finance
 Individually Designed
 International Business (Dual Major)
 Management
 Marketing
 Mathematics¹ (*Computer Science*; *Mathematics*; *Mathematics Education*¹)
 Middle-Grades Education (4-8)
 Physics¹ (*General Physics*; *Professional Track*)
 Political Science¹
 Psychology
 Secondary Education (Dual Major)
 Sociology and Anthropology (*Anthropology*; *Sociology*)
 Sports Administration

Bachelor of Science Nursing

Nursing

Master of Business Administration

General Business

Master of Arts in Teaching

Early Childhood Education
 Middle-Grades Education
 Secondary Education (P-12)

Master of Education

Curriculum and Instruction
 Early Childhood Education
 Educational Leadership
 Middle-Grades Education
 Reading

Education Specialist

Curriculum and Instruction
 Educational Leadership

¹Teacher certification available at secondary level if combined with secondary education major.

²Teacher certification, grades P-12 if combined with secondary education major.

Undergraduate Minors
2020-2021

Animal Science	History
Anthropology	International Affairs
Applied Behavior Analysis	Latin American and Caribbean Studies
Art	Legal Studies
Biology	Mathematics
Business	Music
Chemistry	Musical Theatre
Communication Studies	One Health Science
Computer Science	Philosophy
Creative Technologies	Physics
Creative Writing	Political Science
Dance	Psychology
Digital Storytelling	Public Relations
Economics	Religion
English	Social Entrepreneurship
Entrepreneurship and Innovation	Sociology
Environmental Science	Spanish
Environmental Studies	Teaching English as a Foreign Language
Family Studies	Theatre
French	Web Development
Geology	Women's and Gender Studies
German	

Source of data: *Berry College Undergraduate Catalog, 2020-2021*

Section II

Student Information

Comparative Enrollment Statistics
2019-2020 through 2020-2021

Student Category	Graduate						Undergraduate						Total					
	SUMMER		FALL		SPRING		SUMMER		FALL		SPRING		SUMMER		FALL		SPRING	
	2019	2020	2019	2020	2020	2019	2019	2020	2019	2020	2020	2020	2019	2020	2019	2020	2020	2021
FULL TIME	53	20	37	51	57	44	13	16	1,911	1,982	1,818	1,899	66	36	1,948	2,033	1,875	1,943
Men	16	6	17	16	23	14	6	8	752	754	711	707	22	14	769	770	734	721
Women	37	14	20	35	34	30	7	8	1,159	1,228	1,107	1,192	44	22	1,179	1,263	1,141	1,222
PART TIME	76	110	54	68	58	74	441	462	32	24	49	28	517	572	86	92	107	102
Men	27	38	26	28	28	26	152	174	10	7	24	11	179	212	36	35	52	37
Women	49	72	28	40	30	48	289	288	22	17	25	17	338	360	50	57	55	65
TOTAL	129	130	91	119	115	118	454	478	1,943	2,006	1,867	1,927	583	608	2,034	2,125	1,982	2,045
Men	43	44	43	44	51	40	158	182	762	761	735	718	201	226	805	805	786	758
Women	86	86	48	75	64	78	296	296	1,181	1,245	1,132	1,209	382	382	1,229	1,320	1,196	1,287
FULL-TIME EQUIVALENT	89.7	76.6	71.3	96.7	92.7	95.7	186.1	195.0	1,923.7	1,992.1	1,838.3	1,910.0	275.8	271.6	1,995.0	2,088.8	1,931.0	2,005.7

Source of data: Registrar's Enrollment Report

Historical Enrollment
Undergraduate and Graduate
1988-89 to 2020-2021

Year	Fall						Spring					
	Undergraduate		Graduate		Total		Undergraduate		Graduate		Total	
	Headcount	FTE	Headcount	FTE	Headcount	FTE	Headcount	FTE	Headcount	FTE	Headcount	FTE
1988-89	1,676	1,652.0	144	93.0	1,820	1,745.0	1,535	1,504	170	109	1,709	1,613.0
1989-90	1,714	1,680.0	110	48.0	1,824	1,728.0	1,580	1,547	135	69	1,715	1,616.0
1990-91	1,683	1,651.0	122	52.0	1,805	1,703.0	1,528	1,504	148	70	1,676	1,574.0
1991-92	1,609	1,583.0	131	68.0	1,740	1,651.0	1,471	1,450	141	76	1,612	1,526.0
1992-93	1,628	1,605.0	117	46.0	1,628	1,605.0	1,528	1,507	141	76	1,644	1,566.0
1993-94	1,675	1,648.0	113	45.0	1,788	1,693.0	1,509	1,482	164	73	1,673	1,555.0
1994-95	1,725	1,705.0	151	79.0	1,876	1,784.0	1,598	1,573	181	99	1,779	1,672.0
1995-96	1,756	1,733.0	218	108.0	1,974	1,841.0	1,621	1,594	230	126	1,851	1,720.0
1996-97	1,855	1,826.0	218	118.0	2,085	1,948.0	1,716	1,679	227	114	1,943	1,793.0
1997-98	1,876	1,854.0	195	96.0	2,071	1,950.0	1,763	1,740	169	82	1,932	1,822.0
1998-99	1,942	1,917.0	169	67.0	2,111	1,984.0	1,817	1,784	152	88	1,969	1,872.0
1999-00	1,899	1,884.0	190	73.0	2,089	1,957.0	1,779	1,781	178	76	1,957	1,857.0
2000-01	1,825	1,796.0	208	109.0	1,846	1,822.0	1,716	1,695	177	105	1,893	1,800.0
2001-02	1,846	1,822.0	192	105.0	2,053	1,927.0	1,739	1,712	180	107	1,919	1,819.0
2002-03	1,898	1,878.0	155	89.0	2,053	1,967.0	1,770	1,749	160	92	1,930	1,841.0
2003-04	1,895	1,874.0	150	84.0	2,045	1,958.0	1,775	1,750	157	96	1,932	1,846.0
2004-05	1,878	1,851.0	130	76.0	2,008	1,927.0	1,759	1,729	127	76	1,886	1,805.0
2005-06	1,864	1,846.0	107	69.0	1,971	1,915.0	1,729	1,712	140	81	1,869	1,793.0
2006-07	1,718	1,697.0	124	72.0	1,842	1,769.0	1,600	1,581	122	77	1,722	1,658.0
2007-08	1,737	1,714.0	121	75.0	1,858	1,789.0	1,616	1,597	104	62	1,720	1,659.0
2008-09	1,686	1,667.0	109	71.0	1,795	1,738.0	1,581	1,559	130	82	1,711	1,641.0
2009-10	1,777	1,753.0	145	91.0	1,922	1,844.0	1,678	1,652	138	86	1,816	1,738.0
2010-11	1,928	1,903.0	159	106.0	2,087	2,009.0	1,792	1,774	145	96	1,937	1,870.0
2011-12	1,944	1,927.0	149	100.0	2,093	2,027.0	1,816	1,804	144	108	1,960	1,912.0
2012-13	2,041	2,021.0	125	80.0	2,166	2,101.0	1,946	1,923	114	78	2,060	2,000.0
2013-14	2,141	2,121.0	82	58.0	2,223	2,180.0	2,023	2,003	104	71	2,127	2,074.0
2014-15	2,085	2,070.8	92	91.0	2,177	2,134.2	1,969	1,950	123	82	2,092	2,032.0
2015-16	2,123	2,095.7	122	97.0	2,245	2,192.7	2,034	2,005	146	112	2,180	2,117.7
2016-17	2,073	2,058.6	101	78.7	2,174	2,137.3	1,960	1,946	101	76	2,061	2,021.1
2017-18	1,978	1,960.1	132	95.6	2,110	2,055.6	1,886	1,866	117	101	2,003	1,966.9
2018-19	1,936	1,917.5	78	60.8	2,014	1,978.3	1,871	1,838	105	77	1,976	1,914.9
2019-20	1,943	1,923.7	91	71.3	2,034	1,995.0	1,867	1,838	115	93	1,982	1,931.0
2020-21	2,006	1,992.1	119	96.7	2,125	2,088.8	1,927	1,910	118	96	2,045	2,005.7

Source of data: Registrar's Enrollment Report to President (Fall and Spring semesters)

Undergraduate Program Enrollment History by Schools
and Undeclared Majors¹

2016-2017 Through 2020-2021

Term	Campbell School of Business ²	Charter School of Education and Human Sciences ³	Evans School of Humanities, Arts, and Social Sciences	School of Mathematics and Natural Sciences	Division of Nursing ³	Individually Designed	Undeclared	TOTAL
Summer 2016*	69	103	85	111	47	1	8	424
Fall 2016	318	371	417	672	121	2	159	2,060
Spring 2017	323 710	413 887	434 936	599 1,382	111 279	3 6	65 232	1,948 4,432
Summer 2017*	63	135	83	120	44	3	10	458
Fall 2017	310	504	409	605	N/A	5	138	1,971
Spring 2018	338 711	527 1,166	422 914	532 1,257	N/A 44	5 13	56 204	1,880 4,309
Summer 2018*	62	190	85	131	N/A	2	8	478
Fall 2018	337	518	401	575	N/A	2	86	1,919
Spring 2019	354 753	525 1,233	410 896	516 1,222	N/A 0	2 6	30 124	1,837 4,234
Summer 2019*	81	164	85	117	N/A	1	4	452
Fall 2019	334	494	396	625	N/A	1	72	1,922
Spring 2020	332 747	488 1,146	385 866	574 1,316	N/A 0	1 3	58 134	1,838 4,212
Summer 2020*	92	156	97	114	N/A	0	12	471
Fall 2020	343	521	402	640	N/A	0	89	1,995
Spring 2021	362 797	519 1,196	397 896	587 1,341	N/A 0	0 0	48 149	1,913 4,379
<i>Percent Increase/ Decrease Since:</i>								
Fall 2019	2.7%	5.5%	1.5%	2.4%	N/A	-100.0%	23.6%	3.8%
2019-2020	6.7%	4.4%	3.5%	1.9%	N/A	-100.0%	11.2%	4.0%

¹Does not include students in joint enrollment, nondegree seeking majors, second or third majors, and co-op program.

²Prebusiness undeclared students are included in the Campbell School of Business.

³Beginning with fall 2017 semester, Nursing is included with the Charter School of Education and Human Sciences.

*Summer semester include more than one block of classes.

Source of data: Registrar's database-major/minor report; and Analysis of Majors and Minors compiled by Institutional Research

Graduate Program Enrollment History
2010-2011 Through 2020-2021

Term	M.B.A.		M.A.T.		M.Ed.		Ed.S		TOTAL	
Summer 2010	25		N/A		81		38		144	
Fall 2010	32		N/A		89		38		159	
Spring 2011	29	86	7	7	81	251	28	104	145	448
Summer 2011	14		8		69		46		137	
Fall 2011	26		13		61		49		149	
Spring 2012	26	66	17	38	56	186	45	140	144	430
Summer 2012	17		14		32		45		108	
Fall 2012	27		23		30		45		125	
Spring 2013	28	72	24	61	27	89	35	125	114	347
Summer 2013	18		19		20		18		75	
Fall 2013	24		25		14		19		82	
Spring 2014	23	65	25	69	11	45	45	82	104	261
Summer 2014	13		14		6		28		61	
Fall 2014	23		22		9		38		92	
Spring 2015	22	58	20	56	8	23	73	139	123	276
Summer 2015	13		10		4		82		109	
Fall 2015	23		10		11		78		122	
Spring 2016	21	57	8	28	10	25	107	267	146	377
Summer 2016	14		4		14		52		84	
Fall 2016	23		4		6		68		101	
Spring 2017	22	59	5	13	0	20	74	194	101	286
Summer 2017	16		0		2		111		129	
Fall 2017	30		0		0		102		132	
Spring 2018	32	78	0	0	8	10	77	290	117	378
Summer 2018	26		0		31		72		129	
Fall 2018	41		0		26		11		78	
Spring 2019	41	108	0	0	44	101	20	103	105	312
Summer 2019	27		0		51		51		129	
Fall 2019	38		0		26		27		91	
Spring 2020	42	107	0	0	24	101	49	127	115	335
Summer 2020	24		0		30		76		130	
Fall 2020	46		0		15		58		119	
Spring 2021	43	113	0	0	14	59	61	195	118	367
<i>Percent Increase/ Decrease Since 2019-2020</i>	<i>5.6%</i>		<i>0.0%</i>		<i>-41.6%</i>		<i>53.5%</i>		<i>9.6%</i>	

Source of data: Registrar

Geographic Distribution of **Total Enrollment**

Fall 2015 through Fall 2020

As of August 26, 2020

Area	Percent of <i>Total</i> Students					
	2015	2016	2017	2018	2019	2020
New England	0.6	0.5	0.4	0.4	0.4	0.5
Middle Atlantic	1.6	1.9	2.0	1.8	1.5	1.4
Southeast	80.5	79.0	81.0	80.6	81.4	83.1
North Central	1.8	1.8	1.8	1.8	1.6	1.6
South Central	13.5	14.3	12.9	13.5	13.0	11.7
Western	1.1	1.1	0.8	0.7	0.7	0.7
Guam	0.0	0.0	0.0	0.0	0.0	0.0
Puerto Rico & Virgin Islands	0.0	0.0	0.0	0.0	0.0	0.05
Other (U.S. citizens living abroad) ^a	0.1	0.1	0.2	0.2	0.2	0.2
International ^b	0.7	0.6	0.7	0.8	1.1	0.8
Georgia	69.2	67.2	68.5	67.7	70.2	73.0
(<i>Floyd County</i>)	7.5	6.7	7.0	8.3	8.8	9.7
(<i>Atlanta Area</i>) ^c	25.5	24.5	24.6	23.7	24.8	26.2
Alabama ^d	4.5	4.8	4.6	4.0	4.0	3.3
Florida ^d	5.6	6.5	6.8	7.0	6.3	5.0
North Carolina ^d	3.6	4.0	3.6	3.3	2.6	2.4
South Carolina ^d	1.3	1.1	1.1	1.3	1.4	1.5
Tennessee ^d	7.6	7.5	6.5	7.1	6.7	6.2
Other States ^e	7.4	8.3	8.0	8.5	7.4	7.5

^aOther (United States citizens living abroad) include United States citizens from military bases abroad, missionaries abroad, etc.

^bThe registrar's geographic distribution report is used to calculate the percentages for this table.

International students "Citizen of" students (defined by IPEDS as Nonresident Aliens) listing their Berry addresses and other U.S. addresses have been regrouped with their "Citizen of" address.

NOTE: The percentage of Berry's *undergraduate* enrollment who represent the *undergraduate* international population (Nonresident Aliens "citizen of") were 2015, 0.8; 2016, 0.7; 2017, 0.7; 2018, 0.8; 2019, 1.1; and 2020, 0.8.

^cAtlanta Area includes Clayton, Cobb, DeKalb, Douglas, Fayette, Fulton, and Gwinnett Counties.

^dContiguous states; also the largest in terms of out-of-state enrollment.

^eOther states exclude Alabama, Florida, Georgia, North Carolina, South Carolina, Tennessee, United States Citizens living abroad, and International Students.

Source of data: Institutional Research; Registrar

Total Undergraduate Enrollment by Ethnic Classification
Fall 2007 through Fall 2020

Year	Nonresident Alien (International)	American Indian or Alaska Native	Asian	Asian or Pacific Islander	Black or African American	Hispanics of Any Race	Native Hawaiian or Other Pacific Islander	Two or More Races	Students of Color ¹	White	Race and Ethnicity Unknown	Total Undergraduates
2007	37	3	N/A	28	57	40	N/A	N/A	128	1,542	30	1,737
2008	38	4	N/A	27	76	41	N/A	N/A	148	1,457	43	1,686
2009	31	3	N/A	38	86	60	N/A	N/A	187	1,481	78	1,777
2010	31	3	42	N/A	95	77	0	13	217	1,606	61	1,915
2011	26	3	42	N/A	92	91	1	20	249	1,617	52	1,944
2012	23	5	34	N/A	85	107	2	40	273	1,697	48	2,041
2013	19	4	23	N/A	84	123	2	56	292	1,798	32	2,141
2014	19	2	26	N/A	90	132	3	58	311	1,726	29	2,085
2015	16	5	30	N/A	98	137	1	68	339	1,715	53	2,123
2016	13	6	27	N/A	91	135	0	66	325	1,672	63	2,073
2017	15	5	41	N/A	101	130	1	66	344	1,574	45	1,978
2018	16	7	36	N/A	107	134	1	69	354	1,522	44	1,936
2019	22	7	42	N/A	136	132	0	76	393	1,512	16	1,943
2020	16	5	50	N/A	148	160	0	106	469	1,512	9	2,006

¹Total students of color includes American Indian or Alaska Native; Asian or Pacific Islander; Black, non-Hispanic; Hispanic; for 2007 through 2009. IPEDS revised ethnicity and race categories beginning with 2010. Total students of color includes American Indian or Alaska Native; Asian; Black or African American; Hispanics of Any Race; Native Hawaiian or Other Pacific Islander; and two or more races.

Source of data: IPEDS Fall Enrollment Report

Total Graduate Enrollment by Ethnic Classification
Fall 2007 through Fall 2020

Year	Nonresident Alien (International)	American Indian or Alaska Native	Asian	Asian or Pacific Islander	Black or African American	Hispanics of Any Race	Native Hawaiian or Other Pacific Islander	Two or More Races	Total Students of Color ¹	White Non- Hispanic	Race Unknown	Total Graduates
2007	5	0	N/A	0	3	2	N/A	N/A	5	110	1	121
2008	7	0	N/A	0	3	3	N/A	N/A	6	96	0	109
2009	2	0	N/A	0	6	4	N/A	N/A	10	132	1	145
2010	1	1	0	N/A	6	3	0	2	12	144	2	159
2011	1	1	1	N/A	7	2	0	0	11	130	7	149
2012	1	1	1	N/A	4	2	0	0	8	109	7	125
2013	1	0	0	N/A	6	1	0	1	8	70	3	82
2014	0	0	0	N/A	3	2	0	4	9	80	3	92
2015	0	0	0	N/A	15	4	0	1	20	98	4	122
2016	0	0	0	N/A	19	5	0	0	24	76	1	101
2017	0	0	0	N/A	20	3	0	0	23	104	5	132
2018	0	0	1	N/A	6	4	0	0	11	67	0	78
2019	1	0	0	N/A	5	2	0	4	11	79	0	91
2020	0	0	2	N/A	18	3	0	4	27	89	3	119

¹Total students of color includes American Indian or Alaska Native; Asian or Pacific Islander; Black, non-Hispanic; Hispanic; for 2007 through 2009. IPEDS revised ethnicity and race categories beginning with 2010. Total students of color includes American Indian or Alaska Native; Asian; Black or African American; Hispanics of Any Race; Native Hawaiian or Other Pacific Islander; and two or more races.

Source of data: IPEDS Fall Enrollment Report

Undergraduate Enrollment Analysis
of Other Countries Represented¹
2020-2021

Country	Number of <i>Undergraduate</i> Students 2020-2021	
	Nonresident Alien	Resident Alien
Argentina	1	
Austria	2	
Bermuda	1	
Brazil	1	
Cameroon	1	
China, People's Republic of	1	
Costa Rica	3	1
El Salvador		1
Germany		1
Haiti	2	
India		1
Jamaica		
Mexico		1
Myanmar		1
Nepal	1	
Nicaragua	1	
Nigeria	1	1
Peru	1	
Russian Federation	1	
South Africa		1
United Kingdom of Great Britain and Northern Ireland	1	3
Number of international students:	18	11
Number of countries represented:	14	9

*Unduplicated head count for academic year.

¹"Citizen of" (Nonresident Alien) or "Country of Origin" (Resident Alien), and "ethnicity" category in Jenzabar database

²Nonresident Alien exchange students enrolled for both fall and spring semesters.

Source of data: Registrar's geographic enrollment report

Graduate Enrollment Analysis
of Other Countries Represented¹
2020-2021

Country	Number of <i>Graduate</i> Students 2020-2021*	
	Nonresident Alien	Resident Alien
Number of international students:	0	1
Number of countries represented:	0	1

*Unduplicated head count for academic year.

¹"Citizen of" (Nonresident Alien) or "Country of Origin" (Resident Alien), and "ethnicity" category in Jenzabar database

Source of data: Registrar's geographic enrollment report

SAT/ACT Scores of Entering First-Year Students
Fall 2015 through Fall 2020

Score Range	Fall-Semester Percentage						Change in Percentage Points	Change in Percentage Points
	2015	2016	2017	2018*	2019	2020	↑ ↓ Since 2015	↑ ↓ Since 2019
SAT								
≥ 1270	17.5	18.3	29.6	36.1	32.6	21.1	↑ 3.6	↓ 11.5
≥ 1180	37.8	43.7	62.5	60.1	57.0	48.3	↑ 10.5	↓ 8.7
≥ 1100	64.9	64.3	83.3	83.7	79.7	73.5	↑ 8.6	↓ 6.2
ACT Composite								
≥ 29	27.5	30.4	29.5	30.1	38.9	32.3	↑ 4.8	↑ 6.6
≥ 26	58.6	58.0	58.3	56.2	66.6	60.6	↑ 2.0	↑ 6.0
≥ 23	84.0	85.6	86.9	79.3	87.0	83.7	↓ 0.3	↑ 3.3

*SAT05 scores converted to new SAT16 scale.

Source of data: Admissions

High School GPA of Entering First-Year Students
Fall 2015 through Fall 2020

Score Range	Fall-Semester Percentage						Change in Percentage Points ↑ ↓	Change in Percentage Points ↑ ↓
	2015	2016	2017	2018	2019	2020	Since 2015	Since 2019
≥ 3.5+	N/A	N/A	N/A	N/A	N/A	70.4	N/A	N/A
≥ 3.0+	N/A	N/A	N/A	N/A	N/A	94.5	N/A	N/A
≥ 2.5+	N/A	N/A	N/A	N/A	N/A	99.5	N/A	N/A
≥ 3.5-4.0	76.5	71.1	70.1	71.1	69.7	N/A	N/A	N/A
≥ 3.0-4.0	95.5	93.4	95.3	93.9	93.6	N/A	N/A	N/A
≥ 2.5-4.0	99.8	99.8	99.6	98.4	99.5	N/A	N/A	N/A

Source of data: Admissions

Application Analysis*
Fall 2015 through Fall 2020

Status	Fall-Semester						Percent Change ↑ ↓		Percent Change ↑ ↓	
	2015	2016	2017	2018	2019	2020	Since 2015		Since 2019	
Applicants	4,630	3,697	4,090	4,219	4,560	4,167	↓	10.0	↓	8.6
Admitted	2,526	2,254	2,487	2,746	3,146	3,217	↑	27.4	↑	2.3
Ineligible	421	411	394	427	532	489	↑	16.2	↓	8.1
Enrolled	642	589	604	573	625	619	↓	3.6	↓	1.0

*Excludes readmission students. Includes new first-year and new transfer students.

NOTES: About 77.2 percent of those *applying* were admitted fall 2020.
 About 14.8 percent of those *applying* were enrolled fall 2020.
 About 19.2 percent of those *admitted* were enrolled fall 2020.

Source of data: Admissions

Fall—First-Year Students¹
 Berry College Retention and Graduation Rates
Official Date: Retained as of August 26, 2020
Graduated as of August 6, 2021

First-Year Students Entered (Fall)		Number/Percent Retained										Number/Percent Graduated ²							
		Second Year		Third Year		Fourth Year		Fifth Year		Sixth Year		≤ Four Years		≤ Five Years		≤ Six Years		To Date	
Year	No.	No.	%	No.	%	No.	%	No.	%	No.	%	No.	%	No.	%	No.	%	No.	%
2000	487	385	79	335	69	304	62	44	9	5	1	261	54	304	62	310	64	314	64
2001	538	423	79	345	64	313	58	46	9	2	.4	274	51	325	60	329	61	332	62
2002	566	429	76	369	65	335	59	56	10	3	1	280	50	339	60	342	60	344	61
2003	505	388	77	323	64	301	60	52	10	3	.6	240	48	292	58	299	59	300	59
2004	514	403	78	332	65	306	60	44	9	4	1	262	51	305	59	309	60	313	61
2005	513	386	75	318	62	290	57	53	10	3	1	226	44	284	55	291	57	293	57
2006	428	325	76	286	69	264	62	40	9	4	1	221	52	259	61	264	62	266	62
2007	537	417	78	343	64	313	58	46	9	5	1	269	50	313	58	323	60	325	61
2008	448	333	74	290	65	266	59	24	5	3	1	243	54	273	61	276	62	278	62
2009	569	443	78	387	68	355	62	28	5	2	.4	315	55	360	63	362	64	364	64
2010	653	515	79	451	69	414	63	34	5	2	.3	386	59	423	65	428	66	429	66
2011	557	420	75	371	67	346	62	31	6	1	.2	319	57	353	63	357	64	357	64
2012	618	491	79	434	70	402	65	33	5	4	.6	373	60	403	65	409	66	409	66
2013	672 *	531	79	478	71	441	66	30	4	3	.4	422	63	456	68	466	69	467	####
2014	568 *	473	83	426	75	389	68	33	6	1	.2	357	63	389	69	399	70	400	####
2015	575 *	487	85	429	75	402	70	25	4	4	1	380	66	406	71	415	72		
2016	534 *	418	78	358	67	334	63	18	3			325	61	342	64				
2017	553 *	464	84	422	76	383	69					374	68						
2018	509 *	424	83	372	73							17	3						
2019	577	486	84									2	0.3						
2020	619																		

*IPEDS Exclusions to select cohorts due to student deaths (FA13, FA14, FA15, FA16, FA17, and FA18). Adjustments have been made to retention and graduation rates based on the term of students' death (adjustments in italics in table above).

¹Includes students entering in the fall semester who may bring with them some credit hours gained from AP credit, CLEP, or Joint Enrollment.

²Retention calculations include students who withdraw to complete dual-degree nursing or engineering degrees. Students who graduate from these dual-degree programs are included in the graduation rates for their cohort.

^aFall 2014 Cohort: Sixth-year graduation rates updated to include two students who graduated but were not on the original graduation list.

Source of data: Institutional Research; Registrar

Transfer Students*
 Berry College Retention and Graduation Rates
Official Date: Retained as of August 26, 2020
Graduated as of August 6, 2021

Transfer Students Entered (Fall)		Number/Percent Retained								Number/Percent Graduated ¹									
		Second Year		Third Year		Fourth Year		Fifth Year		≤ Two Years		≤ Three Years		≤ Four Years		≤ Five Years		To Date	
Year	No.	No.	%	No.	%	No.	%	No.	%	No.	%	No.	%	No.	%	No.	%	No.	%
2000	58	44	76	24	41	10	17	0	0	12	21	27	47	36	62	36	62	36	62
2001	72	53	74	32	44	5	7	1	1	19	26	45	63	48	67	50	69	50	69
2002	72	55	76	32	44	8	11	0	0	14	19	36	50	44	61	44	61	44	61
2003	70	54	77	34	49	9	13	0	0	13	19	35	50	44	63	46	66	47	67
2004	66	53	80	32	48	5	8	2	3	16	24	40	61	47	71	49	74	49	74
2005	69	45	65	34	49	8	12	1	1	11	16	33	48	42	61	44	64	44	64
2006	56	44	79	30	54	9	16	2	4	9	16	28	50	40	71	41	73	41	73
2007	44	35	80	27	61	11	25	2	5	5	11	23	52	32	73	32	73	33	75
2008	63	48	76	32	51	8	13	1	2	10	21	27	43	34	54	34	54	36	57
2009	53	39	74	31	58	4	8	2	4	4	8	29	55	38	72	40	75	40	75
2010	41	28	68	24	59	4	10	1	2	4	10	28	68	31	76	31	76	32	78
2011	46	32	70	22	48	7	15	0	0	6	13	22	48	29	63	29	63	29	63
2012	39	29	74	25	64	5	13	0	0	4	10	22	56	27	69	28	72	28	72
2013	40	31	78	19	48	3	8	0	0	10	25	27	68	30	75	30	75	30	75
2014	37	29	78	24	65	4	11	1	3	4	11	23	62	26	70	27	73	27	73
2015	39	33	85	23	59	5	13	0	0	7	18	23	59	28	72	28	72	28	72
2016	39	29	74	19	49	5	13	0	0	10	26	24	62	29	74	29	74		
2017	42	33	79	22	52	4	10			8	19	26	62	30	71				
2018	46	40	87	21	46					15	33	32	70						
2019	35	22	63							7	20								
2020	28																		

¹Retention calculations include students who withdrew to complete dual-degree nursing or engineering degrees (specific cases are included in footnotes below). Students who graduate from these dual-degree programs are included in the graduation rates for their cohort.

Source of data: Institutional Research; Registrar

Age Distribution of
Undergraduate Students
As of August 26, 2020

Age	Percentage of		
	Men (N=761)	Women (N=1,245)	All Students (N=1,006)
17-18	12.1	15.5	14.2
19	29.2	27.6	28.2
20	21.2	23.9	22.9
21	19.6	20.5	20.1
22	14.5	10.2	11.8
23-24	2.8	1.4	1.9
25-29	0.7	0.3	0.4
30-34	0.0	0.0	0.0
35-39	0.0	0.2	0.1
40-44	0.0	0.0	0.0
45+	0.1	0.3	0.2
Total	100.0	100.0	100.0

Average age of all undergraduate = 20

Source of data: Registrar's database

Age Distribution of
Graduate Students
As of August 26, 2020

Age	Percentage of		
	Men (N=44)	Women (N=75)	All Graduate Students (N=119)
21-25	22.7	17.3	19.3
26-30	20.5	21.3	21.0
31-35	11.4	16.0	14.3
36-40	15.9	14.7	15.1
41-45	18.2	12.0	14.3
46-50	9.1	16.0	13.4
51+	2.3	2.7	2.5
Total	100.0	100.0	100.0

Average age of all graduate = 35

Source of data: Registrar's database

Section III

Academic Profile

Number of Undergraduate Majors by Schools
Spring 2016 Through Spring 2021

School	Number of Spring Majors (1st, 2nd, 3rd, and 4th)					
	2016	2017	2018	2019	2020	2021
Campbell School of Business	398	402	416	428	391	430
Charter School of Education and Human Sciences*	468	474	589	582	538	580
Evans School of Humanities, Arts, and Social Sciences	501	509	496	494	464	480
School of Mathematical and Natural Sciences	646	617	555	536	599	622
Division of Nursing*	115	111	N/A	N/A	N/A	N/A
Individually Designed**	N/A	4	5	3	2	1

* Division of Nursing merged into Charter School in fall 2017.

**Beginning spring 2017, individually designed majors were reported separately from schools.

Source of data: Institutional Research and Registrar

Summary of Undergraduate Majors and Minors by Schools
Official Counting Date: April 12, 2021

School	Majors					Minors
	First	Second	Third	Fourth	Total	
Campbell School of Business	362	67	1	0	430	147
Charter School of Education and Human Sciences*	519	61	0	0	580	170
Evans School of Humanities, Arts, and Social Sciences	397	82	1	0	480	266
School of Mathematical and Natural Sciences	587	34	1	0	622	334
Individually Designed**	0	1	0	0	1	0
Women's Studies**	0	0	0	0	0	7
Total	1,865	245	3	0	2,113	924

* Division of Nursing merged into Charter School in fall 2017.

**Beginning spring 2017, individually designed majors and women's studies minors were reported separately from schools.

Source of data: Institutional Research and Registrar

Number of Undergraduate Majors in Rank Order
Official Counting Date: April 12, 2021

Rank	Major/Concentration	Number of (1st, 2nd, and 3rd)	
		Concentrations	Majors
1.	Animal Science		199
	<i>Animal Science (no concentration)</i>	1	
	<i>Pre-Vet/Pre-Professional Science</i>	24	
	<i>Production/Management</i>	174	
2.	Psychology		156
3.	Biology		132
	<i>Concentration I</i>	114	
	<i>Concentration II</i>	18	
4.	Communication		127
	<i>Communication (no concentration)</i>	1	
	<i>Digital Storytelling</i>	20	
	<i>Filmmaking / Cinematic Arts</i>	19	
	<i>Multimedia Journalism</i>	6	
	<i>Public Relations</i>	56	
	<i>Sports Communication</i>	15	
	<i>Visual Communication</i>	10	
5.	Exercise Science		110
	<i>Allied Health Pre-professional</i>	92	
	<i>Clinical/Research</i>	3	
	<i>Strength and Conditioning</i>	15	
6.	Nursing		105
7.	Management		92
8.	Biochemistry		84
9.	Marketing		74
10.	Finance		70
11.	Creative Technologies		65
12.	Dual-Degree Engineering		62
13.	Economics		54
14.	Prenursing		47
15.	Accounting		46
16.	Secondary Education		45
17.	Political Science		44

Number of Undergraduate Majors in Rank Order – April 12, 2021 (Continued)

Rank	Major/Concentration	Number of (1st, 2nd, and 3rd)	
		Concentrations	Majors
18.	Religion and Philosophy		42
	<i>Biblical and Christian Studies</i>	31	
	<i>Biblical & Christian Studies, and Ethics & Value Theory</i>	1	
	<i>Philosophy</i>	8	
	<i>Philosophy and Religious Studies</i>	1	
	<i>Religious Studies</i>	1	
18.	Sports Administration		42
20.	Environmental Science		40
	<i>Biology</i>	6	
	<i>EVS</i>	3	
	<i>Geoscience</i>	4	
	<i>Public Policy</i>	1	
	<i>Environmental Science (no concentration)</i>	26	
20.	Mathematics		40
	<i>Computer Science</i>	9	
	<i>Mathematics</i>	24	
	<i>Mathematics Education</i>	7	
22.	Elementary Education		39
23.	History		36
24.	English		34
25.	Chemistry		30
25.	Spanish		30
27.	Creative Writing		27
28.	Early Childhood Education		24
29.	Music Education		23
30.	Prebusiness–Undeclared		22
31.	Sociology and Anthropology		20
	<i>Anthropology</i>	7	
	<i>Sociology</i>	10	
	<i>Sociology and Anthropology</i>	3	
32.	Applied Physics		18
33.	Physics		17
	<i>General Physics</i>	5	
	<i>Professional Track</i>	12	
34.	Art		16
	<i>Art Education</i>	3	
	<i>Art History</i>	3	
	<i>Fine Art/Studio</i>	10	

Number of Undergraduate Majors in Rank Order – April 12, 2021 (Continued)

Rank	Major/Concentration	Number of (1st, 2nd, and 3rd)	
		Concentrations	Majors
34.	International Studies		16
36.	Music		15
37.	Middle-Grades Education		12
38.	Environmental Studies		11
	<i>Environmental Policy</i>	8	
	<i>Environmental Studies</i>	3	
38.	Theatre		11
40.	German		9
	<i>German (no concentration)</i>	5	
	<i>German</i>	1	
	<i>German Studies</i>	3	
40.	Music with Elective Studies in Business		9
42.	International Business		7
43.	French		4
	<i>French (no concentration)</i>	3	
	<i>French</i>	1	
44.	History Plus		2
	<i>History Plus Justice</i>	1	
	<i>History Plus Gender</i>	1	
44.	International Affairs		2
44.	Music Performance		2
47.	Individually Designed		1
	<i>Cyber-Law</i>	1	
<i>(47 majors total; where applicable, concentrations noted in italics)</i>			
SUBTOTAL			2,113
LESS Second Majors			-1
LESS Third Majors			-3
LESS Students with Two Degrees and Two First Majors			-4
Joint Enrollment			7
Nondegree			7
Undeclared			48
TOTAL UNDERGRADUATE STUDENTS			2,167

Number of Graduate Majors
Official Counting Date: April 12, 2021

Degrees/Majors	Number of Graduate	
	Majors	Degrees
GRADUATE STUDENTS:		
M.B.A.		43
<i>General Business</i>	43	
M.Ed.		12
<i>Curriculum and Instruction</i>	11	
<i>Educational Leadership</i>	1	
Ed.S.		61
<i>Curriculum and Instruction</i>	61	
Nondegree		2
<i>Graduate Education</i>	2	
<hr style="border-top: 1px dashed black;"/>		
TOTAL GRADUATE STUDENTS	118	118

Number Undergraduate and Graduate Majors Summary
Official Counting Date: April 12, 2021

Major	Number	
	Majors (1st)*	Students
Undergraduate	1,927	1,923
Graduate	118	118
<hr style="border-top: 1px dashed black;"/>		
Total Students	2,045	2,041

*Includes first major for second degrees; and excludes second and third majors.

Source of data: Institutional Research and Registrar

**Dean's List Summary
(Undergraduates)**

2015-2016 Through 2020-2021
As of July 29, 2021

Session	Number on Dean's List	Number With 4.00	Percent on Dean's List With 4.00	Undergraduate FTE Enrollment	Percent of FTE With 4.00	Percent of FTE on Dean's List
2015-2016						
Summer	1	0	0.0	144	0.0	0.7
Fall	737	112	15.2	2,096	5.3	35.2
Spring	738	122	16.5	2,005	6.1	36.8
2016-2017						
Summer	3	0	0.0	169	0.0	1.8
Fall	767	127	16.6	2,059	6.2	37.3
Spring	789	134	17.0	1,946	6.9	40.5
2017-2018						
Summer	3	0	0.0	187	0.0	1.6
Fall	757	134	17.7	1,960	6.8	38.6
Spring	733	132	18.0	1,866	7.1	39.3
2018-2019						
Summer	4	0	0.0	193	0.0	2.1
Fall	792	152	19.2	1,918	7.9	41.3
Spring	738	135	18.3	1,838	7.3	40.2
2019-2020						
Summer	2	0	0.0	186	0.0	1.1
Fall	821	191	23.3	1,924	9.9	42.7
Spring	861	275	31.9	1,838	15.0	46.8
2020-2021						
Summer	5	1	20.0	195	0.5	2.6
Fall	940	251	26.7	1,992	12.6	47.2
Spring	871	225	25.8	1,910	11.8	45.6

Source of data: Institutional Research

Degrees Granted
2009-2010 Through 2020-2021

Years	B.A.	B.Mus.	B.S.	B.S.N.	M.B.A.	M.A.T.	M.Ed.	Ed.S.	Total
2009-2010 ^a	125	3	210	N/A	14	N/A	26	5	383
2010-2011 ^b	107	6	263	N/A	18	N/A	28	10	432
2011-2012 ^c	119	3	213	N/A	11	N/A	36	27	409
2012-2013 ^d	114	1	291	N/A	13	1	21	45	486
2013-2014 ^e	119	4	343	N/A	14	7	15	17	519
2014-2015 ^f	88	4	312	15	7	8	8	12	454
2015-2016 ^g	105	3	323	30	11	6	0	76	554
2016-2017 ^h	112	3	350	26	10	5	7	46	559
2017-2018 ⁱ	98	3	309	24	11	0	0	50	495
2018-2019 ^j	100	2	354	26	16	0	4	48	550
2019-2020 ^k	73	12	292	37	25	0	23	18	480
2020-2021 ^l	83	11	309	45	14	0	11	40	513

NOTE: Degrees awarded July 1 through June 30.

^aThree students each received two degrees BA and BS for 2009-2010.

^bFive students each received two degrees (BA and BS) for 2010-2011.

^cThree students each received two degrees (BA and BS) for 2011-2012.

^dThree students each received two degrees (two received BA and BS; one received BA and BSH) for 2012-2013.

^eOne student received two degrees (BA and BSH) for 2013-2014.

^fFour students received two degrees (three received BA and BS; one received BS and BSN) for 2014-2015.

^gTwo students each received two degrees, BA and BS for 2015-2016.

^hThree students each received two degrees, BA and BS for 2016-2017.

ⁱTwo students each received two degrees, BA and BS for 2017-2018.

^jFive students each received two degrees, (two received BA and BS; two received BA and BSH; one received BS and BSN) for 2018-2019.

^kTwo students each received two degrees (one received BA and BSH; one received BS and BMUSH) 2019-2020.

Data Correction: Two additional students were added to B.S. and Total degrees for 2019-2020, on 11/4/2020.

^lThree students each received two degrees (one received BA and BSH; two received BA and BS) for 2020-2021.

Source of data: Registrar and Institutional Research Annual Report

Total Degrees Awarded
2019-2020 and 2020-2021

Degree	August 2019	December 2019	May 2020 ^a	Total	August 2020	December 2020	May 2021 ^b	Total
B.A.	3	12	52	67	3	10	59	72
B.A. Honors	0	0	6	6	0	1	10	11
B.Mus.	0	0	11	11	1	1	9	11
B.Mus. Honors	0	0	1	1	0	0	0	0
B.S.	9	34	237	280	19	30	241	290
B.S. Honors	0	1	11	12	0	2	17	19
B.S.N.	1	0	35	36	0	0	44	44
B.S.N Honors	0	0	1	0	0	0	1	1
M.B.A.	2	0	23	25	2	1	11	14
M.A.T.	0	0	0	0	0	0	0	0
M. Ed.	18	0	5	23	8	0	3	11
Ed. S.	10	0	8	18	12	0	28	40
Total	43	47	390	480	45	45	423	513

^aTwo undergraduate students completed two degrees (one with BA and BSH; one with BS and BMUSH).

Data Correction: Two additional students were added to B.S. and Total degrees for December 2019, on 11/4/2020

^bThree undergraduate students completed two degrees (one with BA and BSH; two with BA and BS).

Source of data: Registrar and Institutional Research Annual Report

Undergraduate Degrees Awarded 2020-2021 by Degree and Major

Degree		August		December		May	
		Primary	Secondary	Primary	Secondary	Primary	Secondary
BA	Art: Art Education					2	
	Art: Art History			1		1	
	Art: Fine Art/Studio	1				3	
	Communication: Digital Storytelling			1		1	
	Communication: Filmmaking and Cinematic Arts					1	
	Communication: Multimedia Journalism					2	
	Communication: Public Relations			2		6	
	Communication: Visual Communication					5	
	Creative Writing					4	
	Economics					2	
	English			2		4	
	Environmental Studies: Environmental Studies	1					
	French			1			
	French: French					1	
	German						1
	History			3		5	
	History Plus: History Plus Global Issue	1					
	International Studies					3	
	Marketing						
	Music					1	
	Political Science					1	
	Psychology					1	
	Religion and Philosophy: Biblical and Christian Studies					6	1
Religion and Philosophy: Biblical & Christian Studies and Ethics & Value Theory					1		
Religion and Philosophy: Philosophy						1	
Secondary Education						5	
Spanish					5	2	
Theatre					4		
Subtotal		3	0	10	0	59	10
BAH	Communication: Digital Storytelling					1	
	Communication: Filmmaking and Cinematic Arts					1	
	Communication: Multimedia Journalism					1	
	Communication: Public Relations			1		1	
	Creative Writing					2	
	History						1
	International Studies					1	
	Political Science					1	
	Religion and Philosophy: Philosophy					1	
	Sociology and Anthropology: Sociology and Anthropology					1	
Spanish						2	
Subtotal		0	0	1	0	10	3
B.Mus.	Music Education			1		6	
	Music with Elective Studies in Business	1				3	
Subtotal		1	0	1	0	9	0

Table 3, Undergraduate Degrees Awarded by Degree and Major, 2020-2021 (Continued)

Degree	August		December		May	
	Primary	Secondary	Primary	Secondary	Primary	Secondary
BS Accounting			2	1	13	
Animal Science: Pre-Vet/Pre-Professional Science			6		27	
Animal Science: Production/Management			2		7	
Applied Physics				2	1	2
Biochemistry	5				14	2
Biology: Concentration I			1		12	
Biology: Concentration II			1		3	
Chemistry					2	
Creative Technologies	1		1		12	1
Creative Writing	1					
Dual-Degree Engineering	1		4		3	
Early Childhood Education					9	
Economics			2		7	1
Environmental Science					2	
Environmental Science: Biology					4	
Environmental Science: EVS					2	
Environmental Science: Geoscience			1		4	
Environmental Studies: Environmental Policy					2	
Exercise Science: Allied Health Pre-Professional	1		3		25	
Exercise Science: Strength and Conditioning	1				2	
Finance		1	1		11	3
German						2
International Business		1				2
International Studies						1
Management	3		2		15	7
Marketing	1			1	23	2
Mathematics: Computer Science					3	
Mathematics: Mathematics					3	
Mathematics: Mathematics Education					1	
Middle-Grades Education					2	
Physics: General Physics					1	1
Political Science			1		6	
Psychology	2		2		17	
Religion and Philosophy: Biblical and Christian Studies						1
Secondary Education						1
Sociology and Anthropology: Sociology	1		1			
Spanish						1
Sports Administration	2				8	1
Subtotal	19	2	30	4	241	28
BSH Animal Science: Pre-Vet/Pre-Professional Science			1		2	
Applied Physics					1	
Biochemistry					2	
Creative Writing						1
Early Childhood Education			1			
Economics					2	
Elementary Education					1	
Exercise Science: Allied Health Pre-Professional					1	
Finance					1	

Table 3, Undergraduate Degrees Awarded by Degree and Major, 2020-2021 (Continued)

Degree	August		December		May	
	Primary	Secondary	Primary	Secondary	Primary	Secondary
BSH History						1
(cont.) Individually Designed: Cyber-Law						1
Physics: Professional Track					2	
Political Science					2	
Psychology					2	
Religion and Philosophy: Biblical and Christian Studies						1
Sports Administration					1	
Subtotal	0	0	2	0	17	4
BSN Nursing					44	
Subtotal	0	0	0	0	44	0
BSNH Nursing					1	
Subtotal	0	0	0	0	1	0
Total Degrees/Majors¹	23	2	44	4	381	45
Total Students²	23		43		379	

¹Includes double degrees and second majors.

²Excludes double degrees; second majors.

Some majors may be distributed through several degrees, especially those majors that offer both B.A. and B.S. degrees (such as Psychology). However, even those that are offered for only one degree may be divided between that degree and the degree with honors listing in this table.

Three students in 2020-2021 earned two degrees each (one in December 2020 with BA and BSH and two in May 2021 both with BA and BS). Some majors have two numbers reported. The first is the total number of students who indicated the discipline as a major. Since several pursued multiple majors, and two *earned two degrees*, the total number of majors is greater than the number of students receiving degrees. The "Secondary" column shows the number of students for whom the major listed was their secondary major.

Source of data: Registrar and Institutional Research Annual Report

Graduate Degrees Awarded by Degree and Major
2020-2021

Degree/Major	August 2020	December 2020	May 2021
MASTER OF BUSINESS ADMINISTRATION			
Business Administration	2	1	11
<i>SUBTOTAL</i>	2	1	11
MASTER OF ARTS IN TEACHING			
Early Childhood Education	0	0	0
Middle-Grades Education	0	0	0
Secondary Education	0	0	0
<i>SUBTOTAL</i>	0	0	0
MASTER OF EDUCATION			
Curriculum and Instruction	7	0	3
Educational Leadership	1	0	0
<i>SUBTOTAL</i>	8	0	3
EDUCATION SPECIALIST			
Curriculum and Instruction	12	0	28
Educational Leadership	0	0	0
<i>SUBTOTAL</i>	12	0	28
TOTAL	22	1	42

Source of data: Registrar and Institutional Research Annual Report

Undergraduate Students Graduating With Honors
2014-2015 Through 2020-2021

Year/Session	Number Graduating	Number With Honors	Percent With Honors
2014-2015^a			
Summer	7	0	0.0
Fall	57	14	24.6
Spring	351	154	43.9
Total	415	168	40.5
2015-2016^b			
Summer	11	1	9.1
Fall	49	13	26.5
Spring*	399	152	38.1
Total*	459	166	36.2
2016-2017^c			
Summer	12	2	16.7
Fall	52	15	28.8
Spring*	424	167	39.4
Total*	488	184	37.7
2017-2018^d			
Summer	14	1	7.1
Fall	52	18	34.6
Spring	366	143	39.1
Total	432	162	37.5
2018-2019^e			
Summer	19	1	5.3
Fall	48	16	33.3
Spring	410	169	41.2
Total	477	186	39.0
2019-2020^f			
Summer	13	1	7.7
Fall**	47	14	29.8
Spring	352	158	44.9
Total**	412	173	42.0
2020-2021^g			
Summer	23	1	4.3
Fall**	43	24	55.8
Spring	379	192	50.7
Total**	445	217	48.8

^aData corrected August 2018.

^{**}Data corrected November 4, 2020

^a2014-2015: Summer 2014, 8 degrees awarded to 7 students (1 student with 2 degrees); Fall 2014, 57 degrees were awarded to 57 students; Spring 2015, 354 degrees awarded to 351 students (3 students with 2 degrees); and overall total for 2014-2015 of 419 degrees awarded to 415 students.

^b2015-2016: Summer 2015, 11 degrees were awarded to 11 students; Fall 2015, 49 degrees were awarded to 49 students; Spring 2016, 401 degrees were awarded to 399 students (2 students with 2 degrees)—*largest graduating class since May 2014* ; and overall total for 2015-2016 of 461 degrees awarded to 459 students.

^c2016-2017: Summer 2016, 12 degrees were awarded to 12 students; Fall 2016, 52 degrees were awarded to 52 students; Spring 2017, 427 degrees were awarded to 424 students (3 students with 2 degrees)—*largest graduating class since May 2016* ; and overall total for 2016-2017 of 491 degrees awarded to 488 students.

^d2017-2018: Summer 2017, 14 degrees were awarded to 14 students; Fall 2017, 53 degrees were awarded to 52 students (1 student with 2 degrees); Spring 2018, 367 degrees were awarded to 366 students (1 student with 2 degrees); and overall total for 2017-2018 of 434 degrees awarded to 432 students.

^e2018-2019: Summer 2018, 19 degrees were awarded to 19 students; Fall 2018, 48 degrees were awarded to 48 students; Spring 2019, 415 degrees were awarded to 410 students (5 student with 2 degrees); and overall total for 2018-2019 of 482 degrees awarded to 477 students.

^f2019-2020: Summer 2019, 13 degrees were awarded to 13 students; Fall 2019, 45 degrees were awarded to 45 students; Spring 2020, 354 degrees were awarded to 352 students (2 student with 2 degrees); and overall total for 2019-2020 of 412 degrees awarded to 410 students.

^g2020-2021: Summer 2020, 23 degrees were awarded to 23 students; Fall 2020 44 degrees were awarded to 43 students (1 student with 2 degrees); Spring 2021, 381 degrees were awarded to 379 students (2 students with 2 degrees); and overall total 448 degrees awarded to 445 students.

Alumni Receiving Master's Degree or Higher
As of October 28, 2021

Year Graduated	Percent Five-Years ¹
2008-09	26.2%
2009-10	29.3%
2010-11	31.3%
2011-12	30.4%
2012-13	30.3%
2013-14	30.2%
2014-15	27.5%
2015-16	25.5%

¹ Percent of Berry bachelor degree recipients receiving Master's Degree or Higher within five years of graduation (by June 30th of fifth year), from Berry College or another institution.

Source of data:

National Student Clearinghouse data collected October 28, 2021

Section IV

Faculty Profiles

Institutions Most Frequently Represented
by Berry Faculty's Doctorates

Fall 2020

College/University	Number Represented
University of Georgia	9
Florida State University	7
University of Tennessee	5
Georgia State University	4
Mercer University	4
University of Illinois at Urbana-Champaign	4
University of Texas at Austin	4
University of Virginia	4
Emory University	3
Georgia Institute of Technology	3
Rutgers University	3
University of Florida	3
University of North Carolina at Chapel Hill	3
Auburn University	2
Indiana University	2
Kent State University	2
New Mexico State University	2
Tulane University	2
University of Alabama	2
University of Kentucky	2
University of Louisville	2
University of Miami	2
University of South Carolina	2
University of Wisconsin	2
Virginia Polytechnic Institute State University	2
West Virginia University	2

College/University Represented (Continued)

Additionally, one faculty member holds a terminal degree from each of the following institutions. Six percent hold their last degree from the University of Georgia.

Argosy University	University of California at Santa Barbara
Baylor University	University of Cincinnati
Bowling Green State University	University of Cincinnati-Conservatory of Music
California Institute of Technology	University of Colorado
Case Western Reserve University	University of Connecticut
Claremont Graduate University	University of Denver
Clemson University	University of Durham
Dartmouth University	University of Houston
Louisiana State University	University of Iowa
Massachusetts Institute of Technology	University of Massachusetts
McGill University	University of Memphis
Michigan State University	University of Michigan
New York Medical College	University of Mississippi
North Carolina State University	University of Missouri
Nova University	University of New Orleans
Ohio University	University of North Texas
Oregon State University	University of Notre Dame
Pennsylvania State University	University of Pennsylvania
Purdue University	University of Pittsburgh
Rice University	University of Southern Mississippi
Sam Houston State University	University of Texas at Arlington
South Dakota State University	University of Texas at San Antonio
State University of New York	University of Toronto
Texas A&M University	University of Utah
Texas State University	University of Vermont
The Union Institute and University at Cincinnati	University of Washington
University of Alabama at Birmingham	Virginia Commonwealth University
University of Alabama at Huntsville	Wake Forest University
University of Arizona	Washington State University
University of California at Davis	Wayne State University
University of California at Los Angeles	Western Michigan University
University of California at Riverside	Yale University

Berry College
Faculty*
Fall 2020

School	No. of Full-Time Faculty	Number of Part-Time Faculty						Total Faculty	Total FTE
		Adjuncts	Part-Time Instructional Faculty ¹	Staff ²	Administrators ³	Total Part-Time	Part-Time FTE		
Campbell School of Business	21	3	0	2	1	6	1.00	27	22.00
Charter School of Education and Human Sciences ⁴	31	28	0	7	1	36	8.54	67	39.54
Evans School of Humanities, Arts, and Social Sciences	61	17	0	5	2	24	8.77	85	69.77
School of Mathematical and Natural Sciences	46	1	0	2	1	4	1.83	50	47.83
Administrator (Provost)	0	0	0	0	1	1	0.00	1	0.00
Total	159	49	0	16	6	71	20.14	230	179.14

*Excludes BCC courses and NCR reassigned time.

¹Includes part-time instructional faculty in phased retirement.

²Includes full-time staff (including coaches) with part-time teaching responsibilities.

³Administrators with faculty rank (with or without teaching responsibilities)—Provost, Dean of Academic Services, and four school deans.

⁴Beginning in fall 2017, the Division of Nursing is included with the Charter School of Education and Human Sciences.

⁵Part-Time FTE calculation: Part-time contact teaching load hours divided by twelve equal part-time FTE.

NOTE: Full-time (*includes clinical and visiting faculty*) and part-time faculty counts are based on contr

Source of data: Faculty contracts data base, Human Resource Office; Faculty Teaching Load Reports, Institutional Research

Full-Time Faculty
Rank and Degree
Fall 2020

Rank	Number With				Total	Percent of Those in Rank With Doctorate
	Doctorate	Terminal Master's	Master's	Bachelor's		
Professor	40	0	0	0	40	100.0
Clinical Professor	0	0	0	0	0	0.0
Associate Professor	44	2	0	0	46	95.7
Clinical Associate Professor	3	0	0	0	3	100.0
Assistant Professor	40	2	1	0	43	93.0
Clinical Assistant Professor	7	0	1	0	8	87.5
Subtotal	134	4	2	0	140	95.7
Instructor	2	0	1	1	4	50.0
Clinical Instructor	0	0	3	1	4	0.0
Lecturer	4	1	6	0	11	36.4
Total	140	5	12	2	159	88.1

NOTE: Full-time and part-time faculty counts are based on contract status (*includes visiting faculty*).

Source of data: Faculty contracts data base, Human Resource Office; Faculty Teaching Load Reports, Institutional Research

Full-Time Faculty
Gender Distribution Among Ranks
Fall 2020

Rank	Males		Females		Total	Percent Female of Total FT Faculty 2019 (N=163)
	No.	Percent of No. in Rank	No.	Percent of No. in Rank	M & F	
Professor	28	70.0	12	30.0	40	7.5
Clinical Professor	0	0.0	0	0.0	0	0.0
Associate Professor	26	56.5	20	43.5	46	12.6
Clinical Associate Professor	2	66.7	1	33.3	3	0.6
Assistant Professor	21	48.8	22	51.2	43	13.8
Clinical Assistant Professor	3	37.5	5	62.5	8	3.1
Instructor	2	50.0	2	50.0	4	1.3
Clinical Instructor	2	50.0	2	50.0	4	1.3
Lecturer	3	27.3	8	72.7	11	5.0
Total	87	54.7	72	45.3	159	45.3

NOTE: Full-time and part-time faculty counts are based on contract status (*includes visiting faculty*).

Source of data: Faculty contracts data base, Human Resource Office; Faculty Teaching Load Reports,
Institutional Research

Berry College Faculty
 Number and Percent Tenured in Top Three Ranks
 Fall 2020

Rank	Number in Rank*	Number With Tenure	% of No. in Rank With Tenure
Professor	40	39	97.5
Clinical Professor	0	0	0.0
Associate Professor	46	46	100.0
Clinical Associate Professor	3	0	0.0
Assistant Professor	43	1	2.3
Clinical Assistant Professor	8	0	0.0
Total / % Top 3 Ranks	140	86	61.4
Administrators (Provost and Deans)	6	6	100.0
Total	146	92	63.0

*Total includes all full-time faculty, including those with zero teaching loads and those who are not on tenure track (including visiting faculty). Six administrators who are tenured are also included (one provost and five deans with faculty rank).

Source of data: Faculty contracts data base, Human Resource Office

Full-Time-Equivalent Faculty and Faculty-Student Ratio
2015-2016 Through 2020-2021

Year and Session	FTE Faculty	Faculty-Student Ratio	Year and Session	FTE Faculty	Faculty-Student Ratio
2015-2016			2018-2019		
Fall	181.9	1:12.1	Fall	181.0	1:10.9
Spring	186.1	1:11.4	Spring	178.2	1:10.7
2016-2017			2019-2020		
<i>Fall</i>	182.2	1:11.7	Fall	178.9	01:11.1
Spring	185.5	1:10.9	Spring	179.4	01:10.7
2017-2018			2020-2021		
<i>Fall</i>	184.4	1:11.1	Fall	179.1	01:11.7
Spring	182.1	1:10.8	Spring	175.4	01:11.4

Source of data: Institutional Research; taken from teaching load reports

Age Distribution of Full-Time Faculty*
As of August 31, 2020

<i>Age Bracket</i>	<i>Percentage in Age Bracket</i>
20-24	0.0
25-29	3.8
30-34	11.9
35-39	15.1
40-44	10.7
45-49	12.6
50-54	10.7
55-59	15.1
60-64	11.3
65	2.5
66	1.3
67	1.3
68	1.3
69	0.6
70+	1.9
Total	100.0

Average = 48

*Includes full-time faculty by contract.

Source of data: Faculty contracts database, Human Resource Office

Section V

Financial

Alumni Annual Giving
2017-2018 Through 2020-2021

Item	2017-2018	2018-2019	2019-2020	2020-2021
Alumni Giving	\$1,429,114	\$2,483,606	\$2,277,237	\$1,792,980
Participation College Graduate	20.6%	23.5%	25.3%	23.8%
Number of College Graduate Alumni Donors	2,713	3,140	3,495	3,293

Source of data: Advancement Office

Berry College Financial-Aid Programs
2019-2020 through 2020-2021

Item	2019-2020	2020-2021
BERRY		
Academic Merit Scholarships	\$ 28,458,325	\$ 31,720,890
Alumni & Friends Grants	\$ 5,549,301	6,372,218
Other Berry Scholarships (Talent, Major/Minor, International, etc.)	\$ 605,587	542,489
SUBTOTAL	\$ 34,613,213	\$ 38,635,597
MATCHING GRANTS		
Berry Yellow Ribbon Match	\$ 78,295	83,424
Berry REACH (GSFC)	\$ -	\$ 2,500
SUBTOTAL	\$ 78,295	\$ 85,924
SPECIAL PROGRAMS		
Berry Bonner Scholars	\$ 1,834,525	\$ 2,069,007
Bonner Scholars Foundation - Service	\$ 189,250	\$ 199,211
Bonner Scholars Foundation	\$ 110,000	\$ 187,505
Berry Gate of Opportunity	\$ 1,830,120	\$ 1,861,547
Donor Gate of Opportunity	\$ 1,748,756	\$ 1,798,271
Berry Other Gate of Opportunity	\$ 317,099	\$ 123,854
Berry Goizueta Scholarship	\$ 29,150	\$ 47,000
Goizueta Scholarship	\$ 136,350	\$ 149,500
Lettie Pate Whitehead Foundation	\$ 587,000	\$ 640,000
Leadership & Service Fellows	\$ 220,000	260,500
Berry WinShape College Program	\$ 20,000	26,000
WinShape College Program	\$ 582,392	547,767
SUBTOTAL	\$ 7,604,642	\$ 7,910,162
STATE		
HOPE Scholarship	\$ 2,748,188	3,093,968
Other State Programs	\$ 60,250	74,000
Student Access Loan Program	\$ 644,763	445,229
Tuition Equalization Grant	\$ 1,161,332	1,131,495
Zell Miller Scholarship	\$ 1,986,261	2,271,252
SUBTOTAL	\$ 6,600,794	\$ 7,015,944
FEDERAL		
Pell Grant	\$ 2,055,878	\$ 2,262,879
Supplemental Ed. Opp. Grant (SEOG)	\$ 217,600	143,524
TEACH Grant	\$ 3,752	7,536
NOYCE Grant	\$ 60,690	50,880
Work Study	\$ 216,171	343,942
Subsidized Student Loans	\$ 2,647,878	2,259,781
Unsubsidized Student Loans	\$ 3,773,974	4,034,703
Parent Loan for UG Students (PLUS)	\$ 2,963,027	2,968,870
SUBTOTAL	\$ 11,938,970	\$ 12,072,115
OTHER		
JT Hall Loan	\$ 58,615	31,445
Outside Scholarships	\$ 504,544	558,537
Roughgarden Loan	\$ 4,000	8,000
SUBTOTAL	\$ 567,159	\$ 597,982
TOTAL	\$ 61,403,073	\$ 58,321,638

Source of data: Financial Aid Office